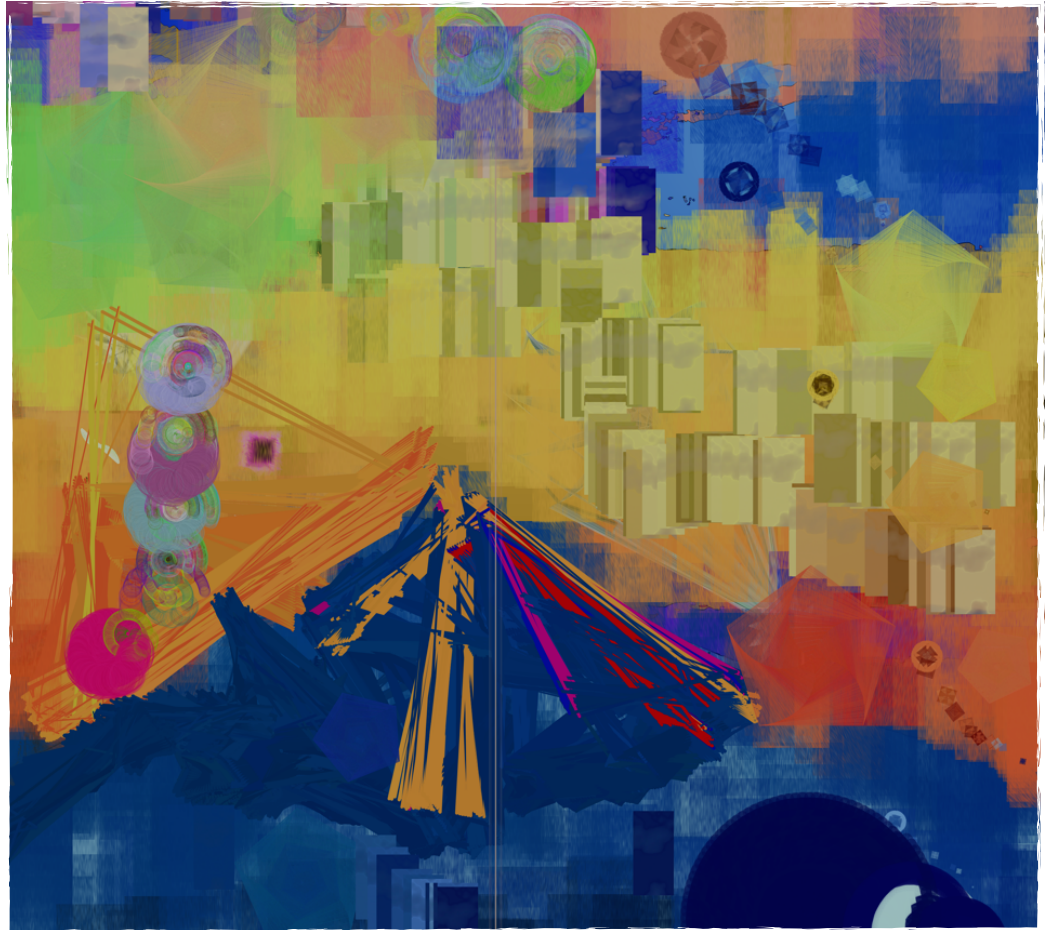


VOLUME
31.1
JANUARY 2023

Between Keys



A publication of the JALT Materials Writers Special Interest Group

The Materials Writers SIG was established for the purpose of helping members to turn fresh teaching ideas into useful classroom materials. We try to be a mutual assistance network, offering information regarding copyright law, sharing practical advice on publishing practices, including self-publication, and suggesting ways to create better language learning materials for general consumption or for individual classroom use.

WWW.MATERIALSWRITERS.ORG

**MATERIALS
WRITERS**
SPECIAL INTEREST GROUP

**JALT**
THE JAPAN ASSOCIATION FOR LANGUAGE TEACHING
全国語学教育学会

Shift key_

Interview with Todd Jay Leonard: Three Decades of EFL Publication

Joel Neff

Publishing, like so many industries, is undergoing a seismic shift in the way it produces textbooks. For both new and would-be authors, learning how to submit a proposal can be a daunting challenge. Likewise, veteran authors can find navigating new technologies and business strategies a difficult task. For all authors, having a friendly guide makes all the difference.

Luckily, during the JALT 2022 conference in Fukuoka, the Materials Writers Program Chair, John Carle, was able to sit down with just such a guide. Todd Leonard has authored over 25 books in his career and has a wealth of knowledge, experience, and insight to offer teachers and materials writers.

Shift key_ issues of Between the Keys, like this one, are where we publish materials that are more than mere print. In this case, we are delighted to share the full interview between John and Todd as it was recorded at JALT 2022 International Conference, Fukuoka Japan, on November 12, 2022.

Three Decades of EFL Publication: Insights and Advice from Todd Jay Leonard.



MW SIG Resources

[MW SIG Website](#)

All the basic information about the SIG is here.

[MW SIG Publication: Between the Keys](#)

We accept submissions all year round.

[MW SIG Showcase](#)

Website featuring textbooks created by SIG members.

[MW SIG YouTube Playlist](#)

Please "like" and subscribe to the channel.

[MW SIG Facebook Page](#)

Please "like" and follow the page for the latest updates.

